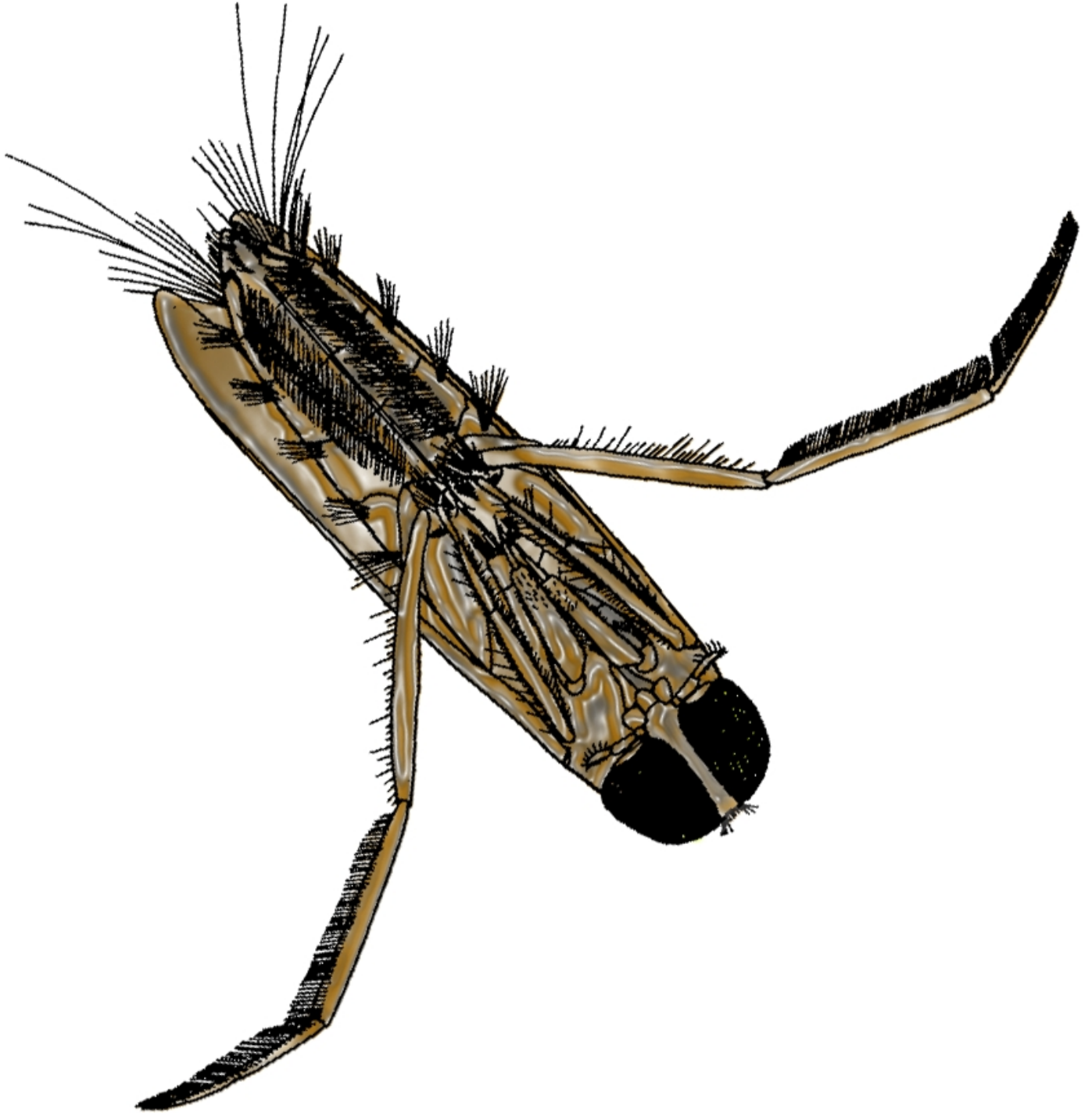


Backswimmer



I am a
BACKSWIMMER

I am usually found in the **Deep Zone** and I am **very tolerant** to pollution.

I am a **carnivore** who likes to suck the body juices of other insects, tadpoles and small fish!

I can even snatch bugs on the water surface, drag them under and eat them.

Freshwater Snail

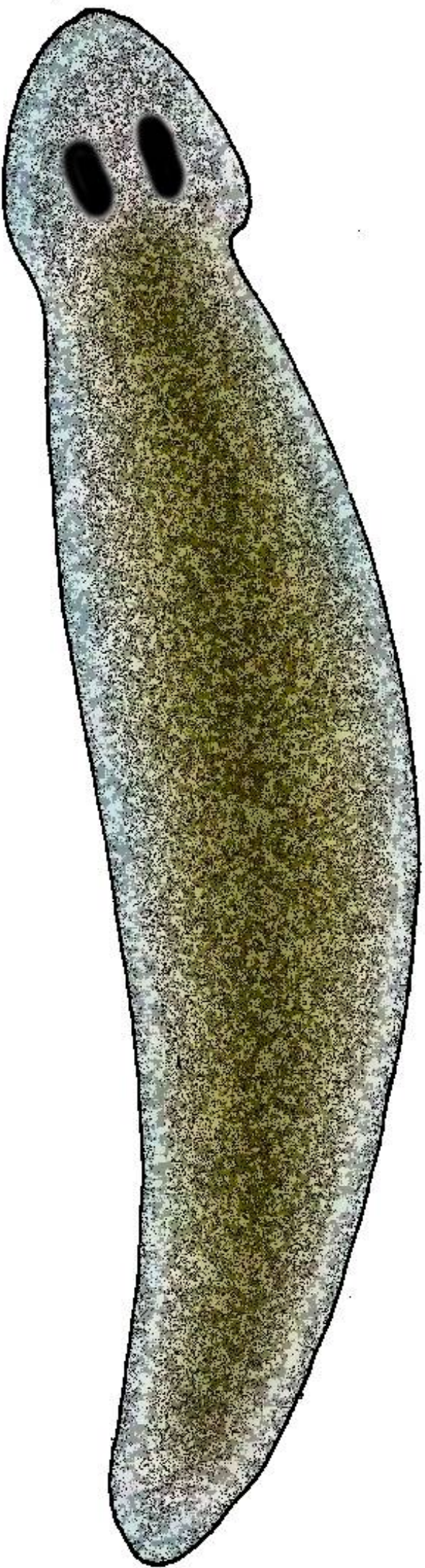


I am a
FRESHWATER SNAIL

I live in the **Benthic Zone** and am
very tolerant to pollution.

I am a **herbivore** and I scrape algae from the
surface of rocks and plants.

Flatworm

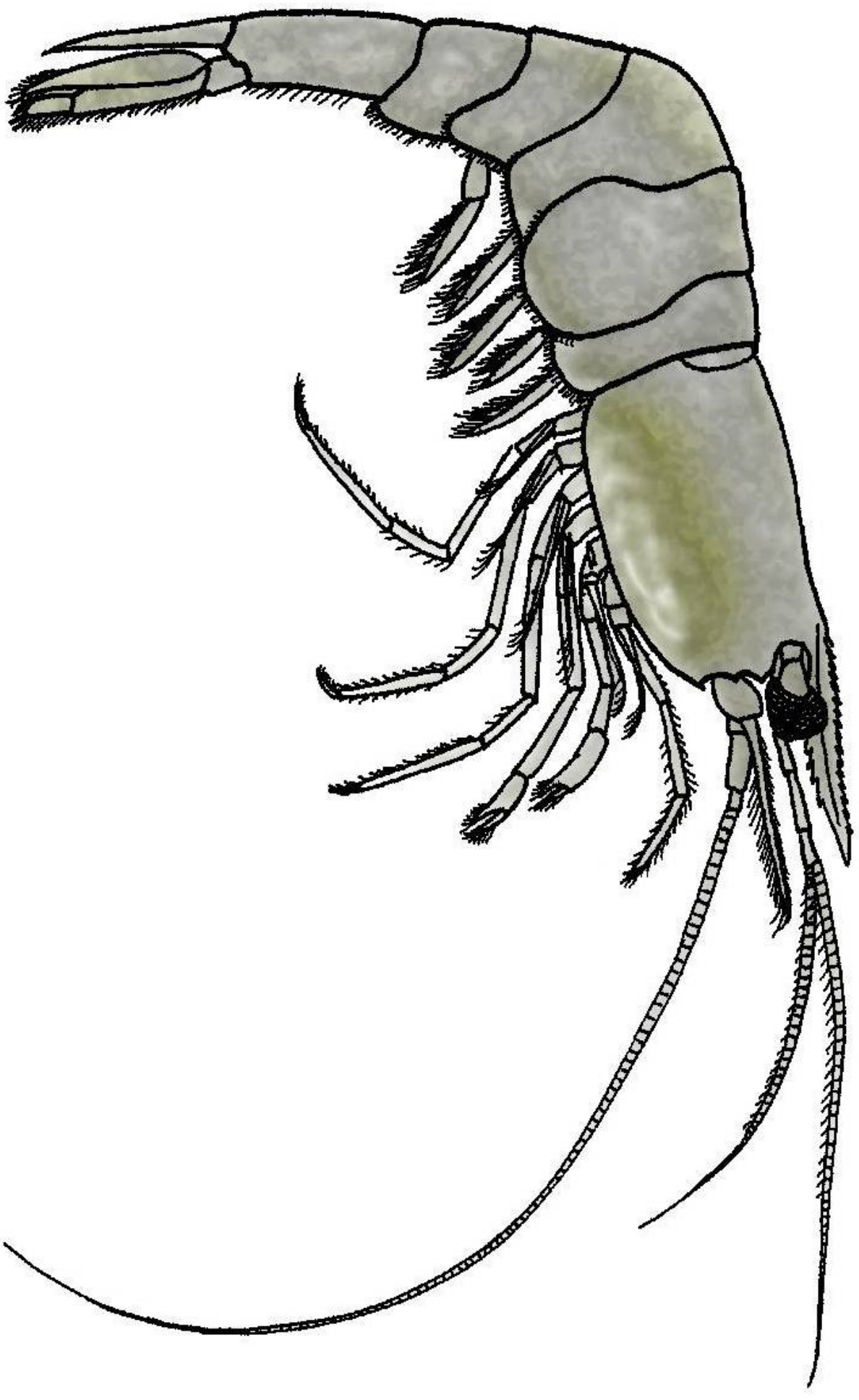


I am a
FLATWORM

I live in the **Benthic Zone** and am **very tolerant**
to pollution.

I like to eat decomposing plant matter, which
makes me a **detritivore**.

Freshwater Shrimp



I am a
FRESHWATER SHRIMP

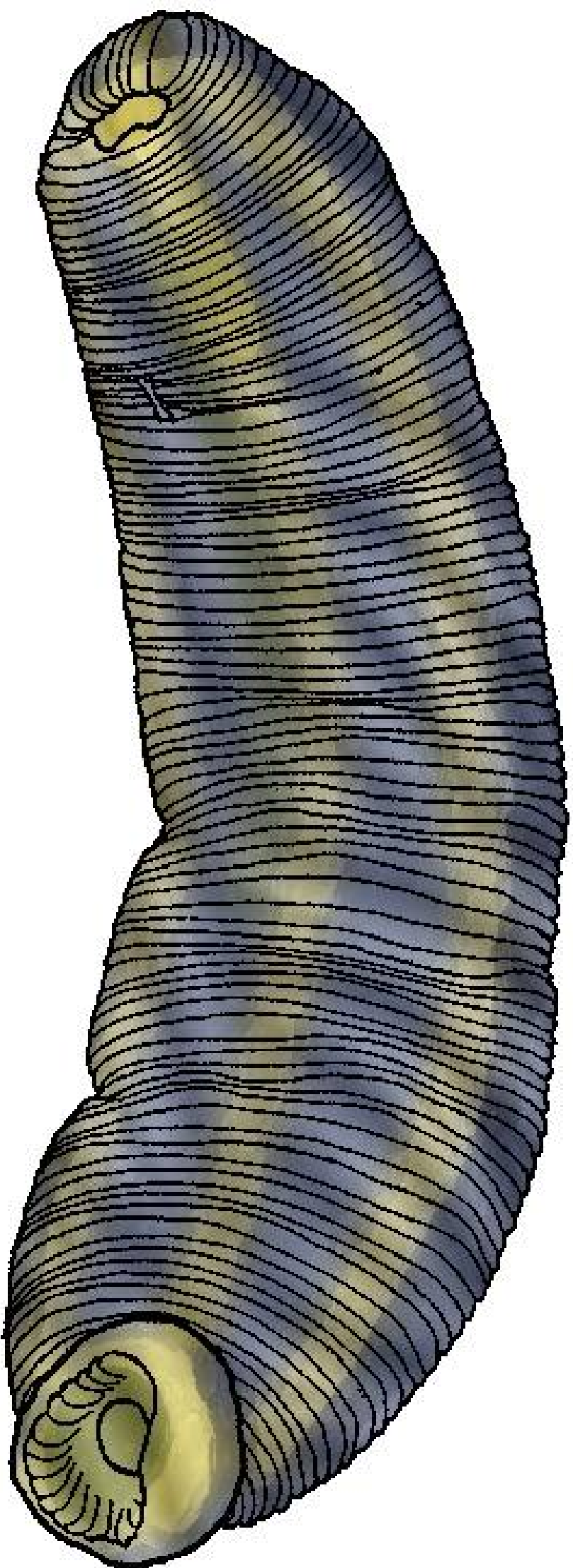
I am usually found in the **Benthic Zone**, often close to the bank, or on rocks or aquatic plants.

I am **very tolerant** to pollution.

I am a **detritivore** and I mainly eat decomposing vegetation, bacteria and algae.

I eat by using the first two pairs of my legs to grab the food and put it in my mouth.

Leech



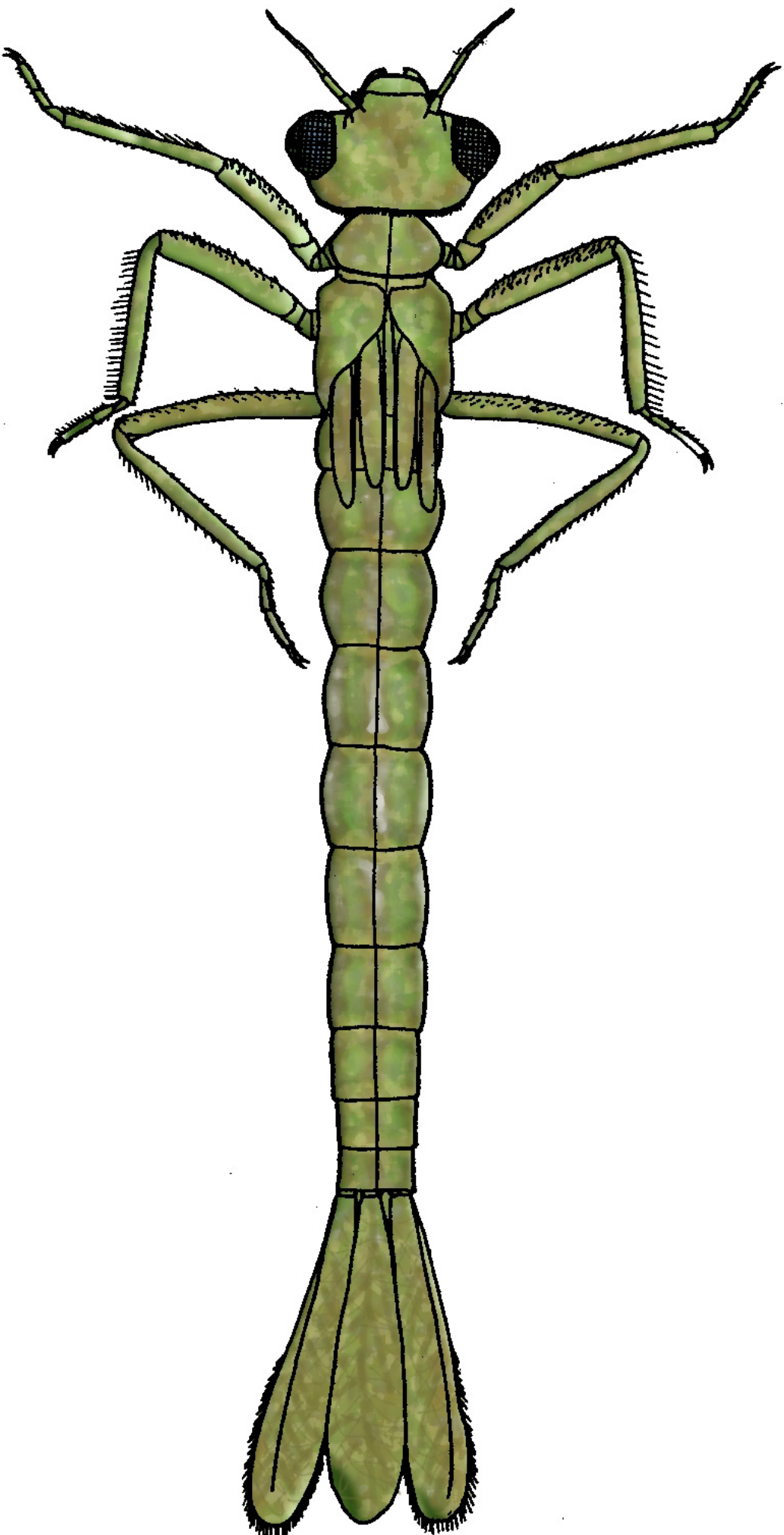
I am a
LEECH

I am found in the **Benthic Zone** and I am **very tolerant** to pollution.

I am a **carnivore** and mainly feed on the blood and juices of snails and other large aquatic animals.

I have suckers at each end of my body that help me to move and latch on to my prey.

Damselfly Larva



I am a
DAMSELFLY LARVA

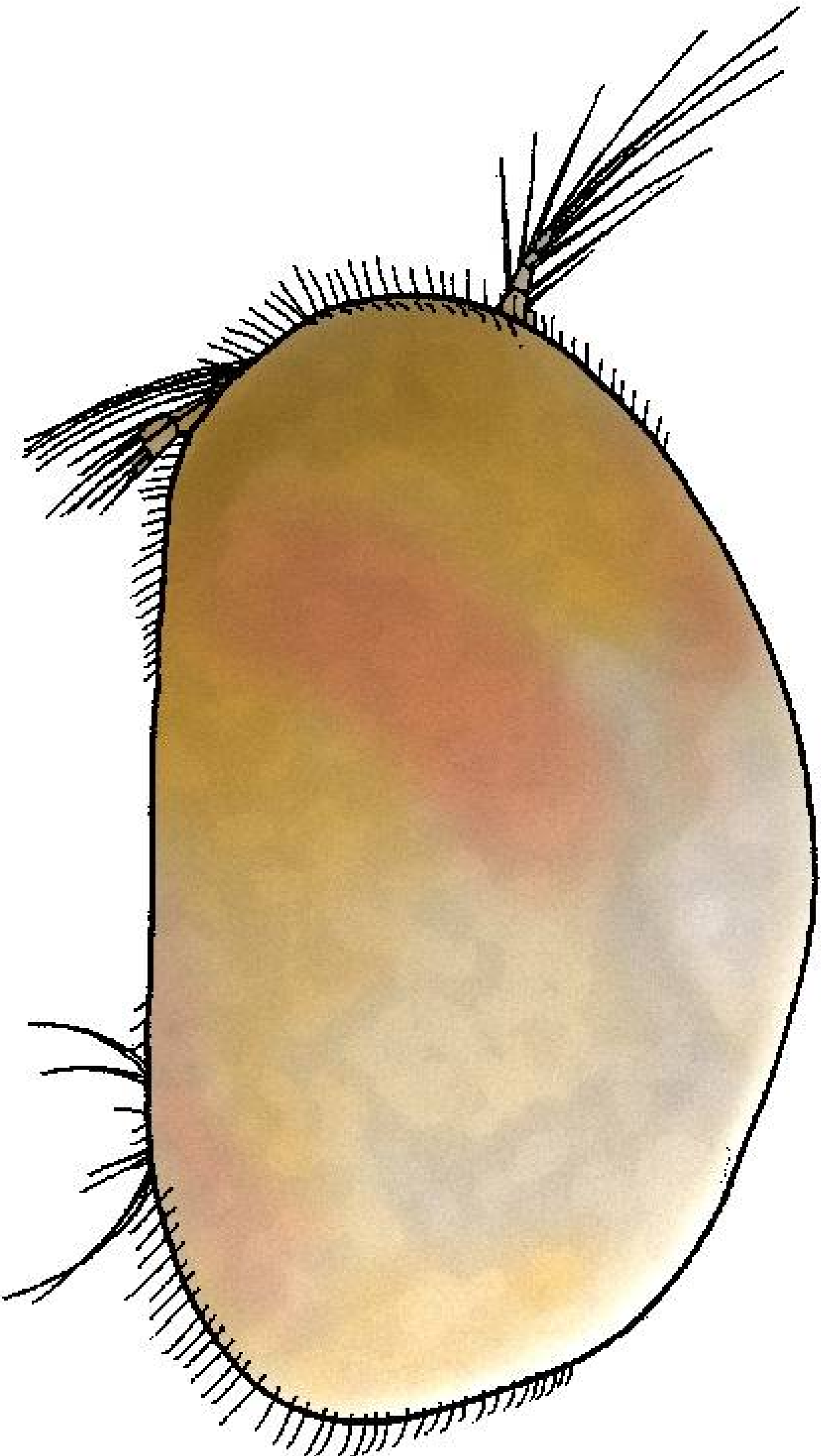
I am usually found in the **Reed Zone** clinging
to reeds, vegetation or snags.

I am **very tolerant** to pollution.

I am a **carnivore**.

The three tail feathers at the end of my body
are actually gills that help me to breathe.

Seed Shrimp



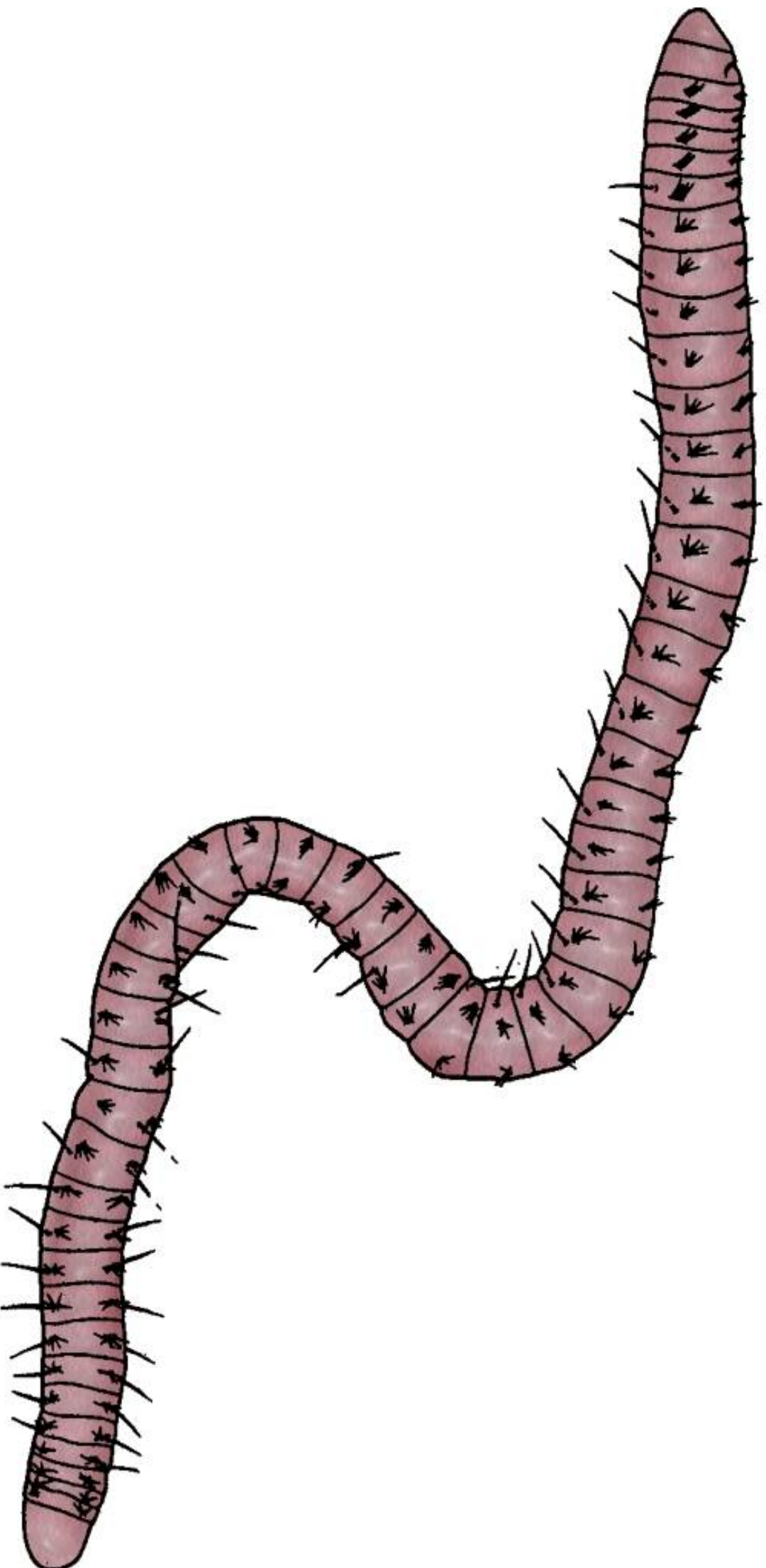
I am a
SEED SHRIMP

I live in the **Benthic Zone**.

I usually eat algae, bacteria and decomposing plants and animals, making me a **detritivore**, but I can also be a **filter feeder, scavenger, herbivore or carnivore**.

I use my antennae for locomotion and I have a hinged, bivalve shell that I can close up around me.

Segmented Worm



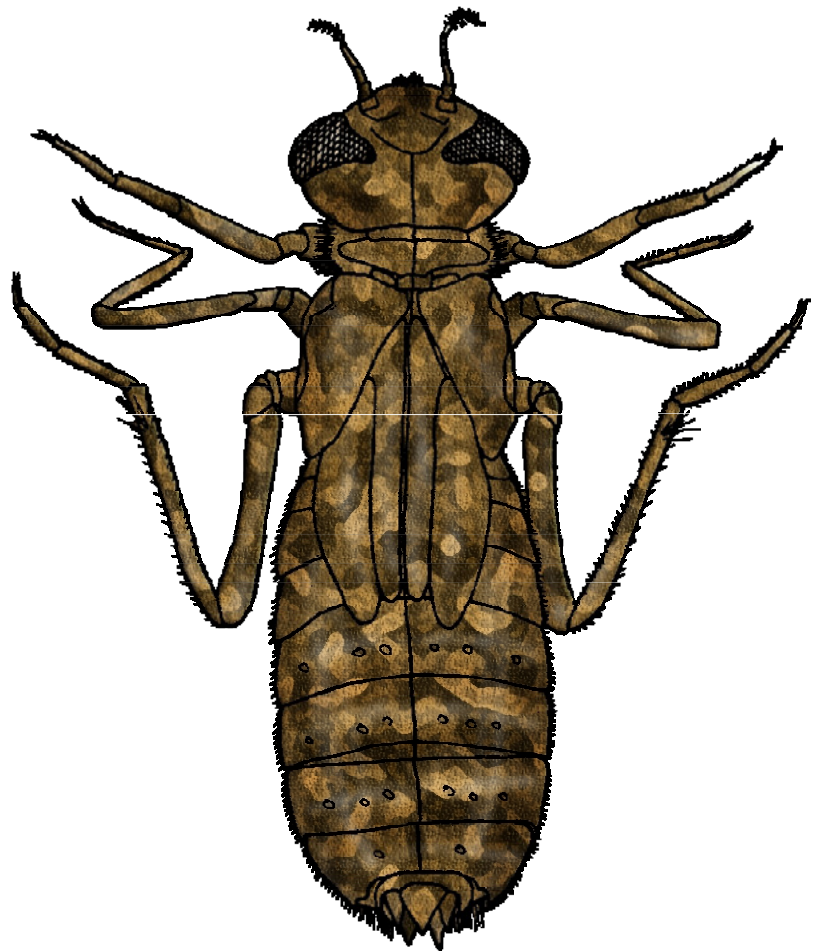
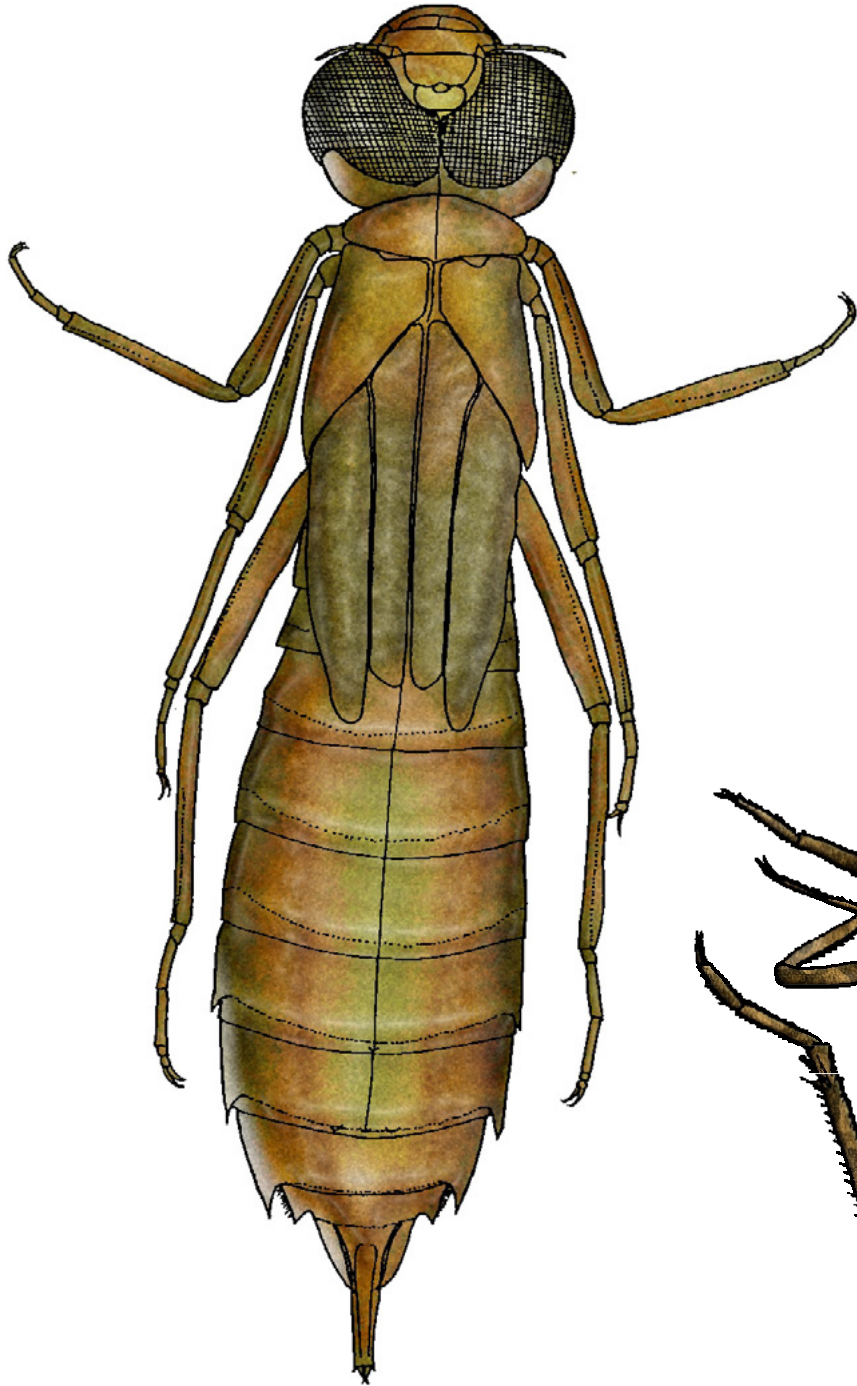
I am a
SEGMENTED WORM

I live in the **Benthic Zone**.

I usually eat bacteria and decomposing plants and animals, making me a **detritivore**.

I usually breath by absorbing oxygen directly through my skin and I am **very tolerant** to pollution.

Dragonfly Larvae



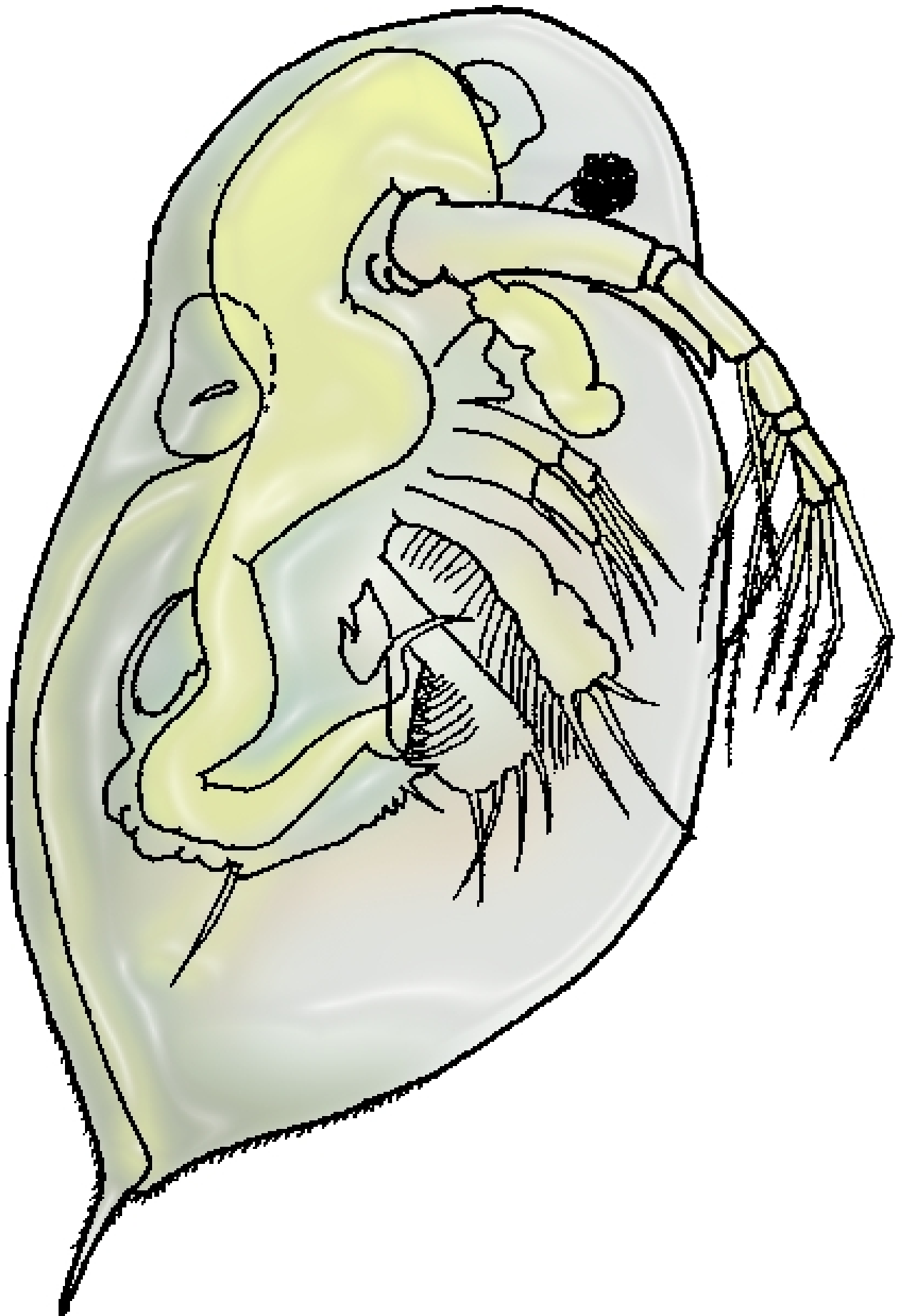
We are
DRAGONFLY LARVAE

We are usually found in the **Reed Zone**
clinging to emergent plants.

We **carnivores**, eating other water bugs, fish
and tapoles, and we are **very tolerant** to
pollution.

We have gills on the inside of our bodies,
therefore we must pump water in and out of
our bottoms to breathe.

Water Flea



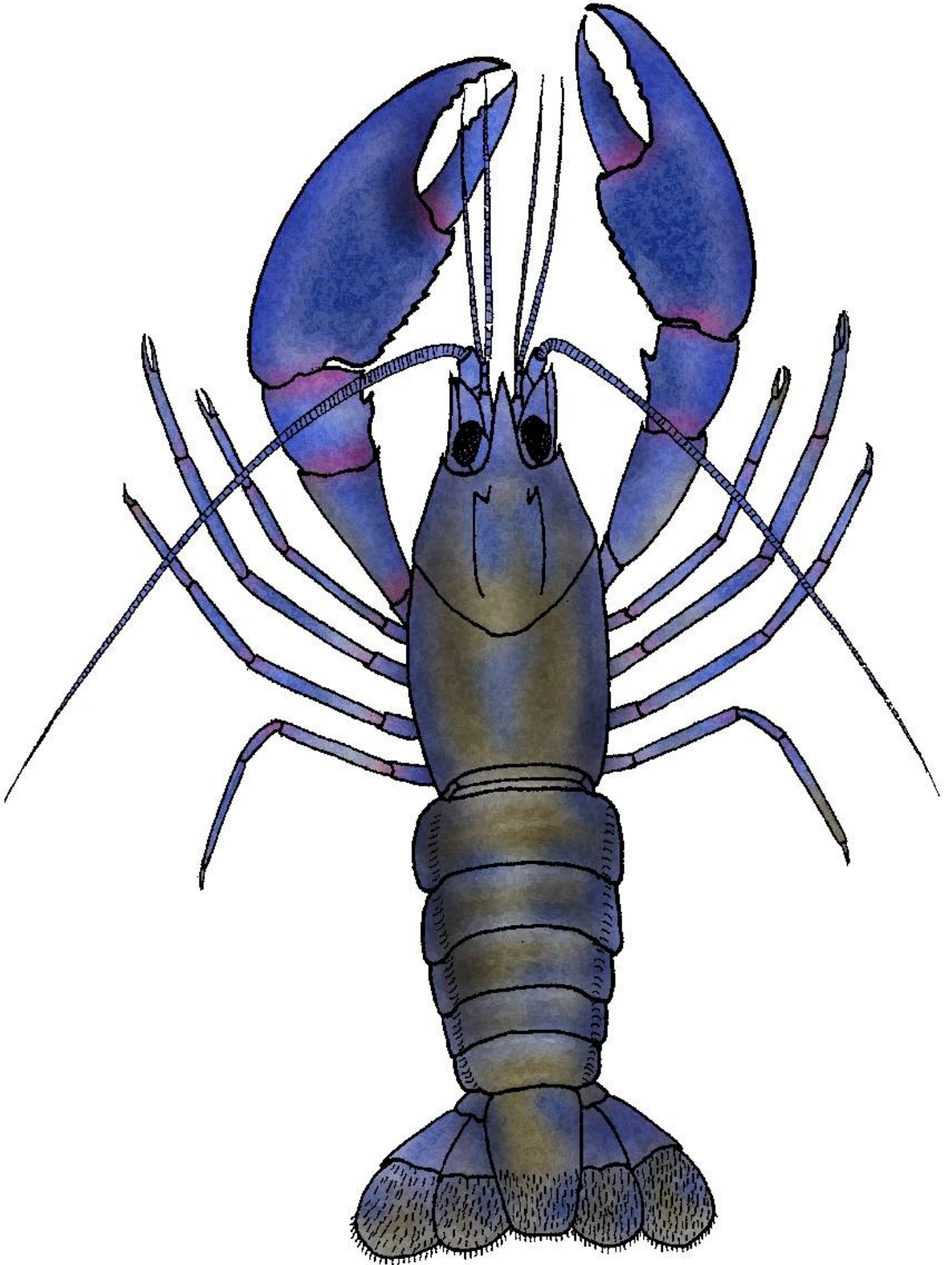
I am a
WATER FLEA

I live in the **Deep Zone**.

I am a tiny **herbivore** and eat algae.

Unfortunately for me I am a tasty meal for
many aquatic invertebrates.

Yabby



I am a
YABBY

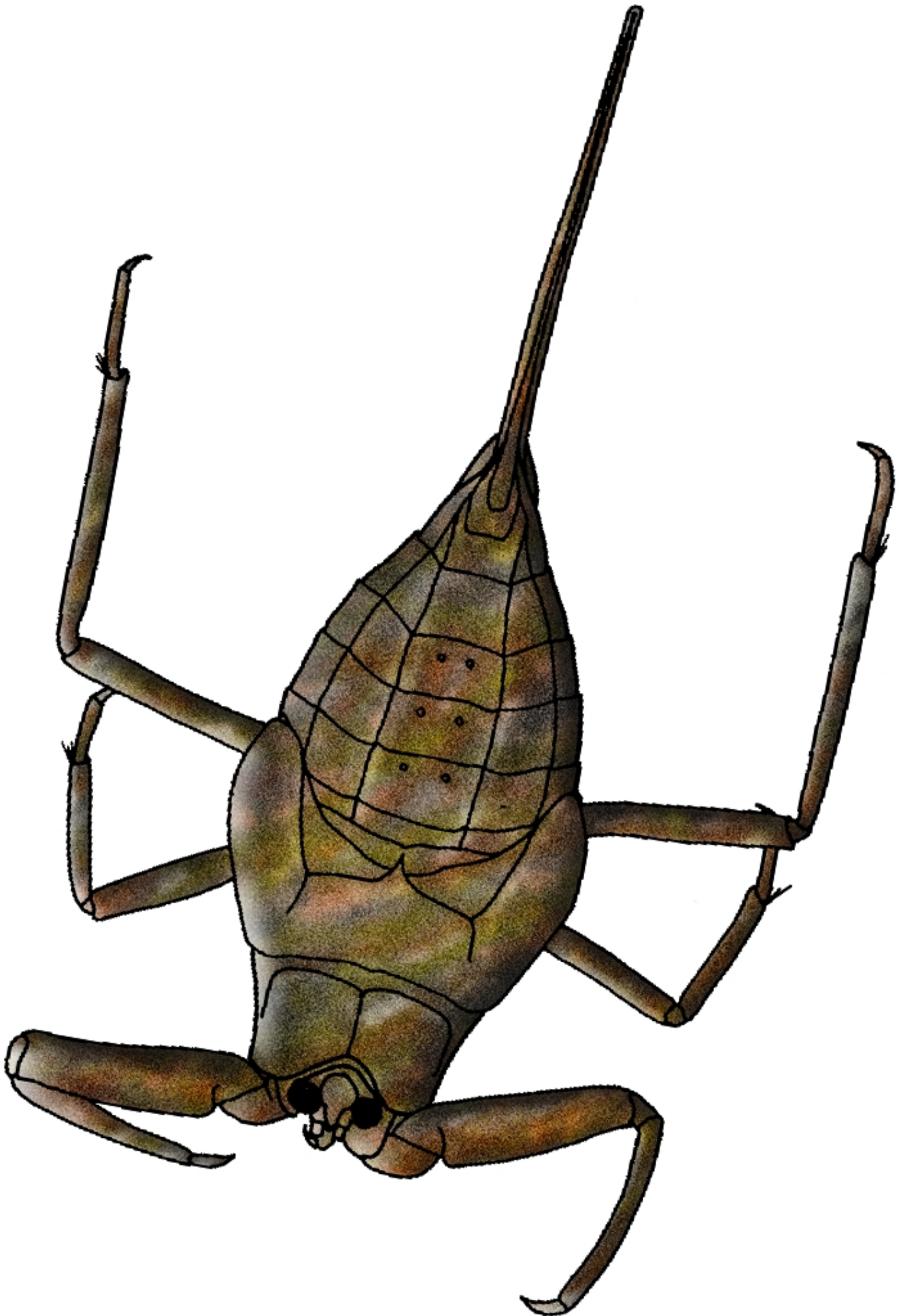
I am found in the **Benthic Zone**.

I am **tolerant** to pollution.

I am an **omnivore** and eat both plant and animal matter.

I have a hard shell (exoskeleton) which I will shed as I grow.

Water Scorpion



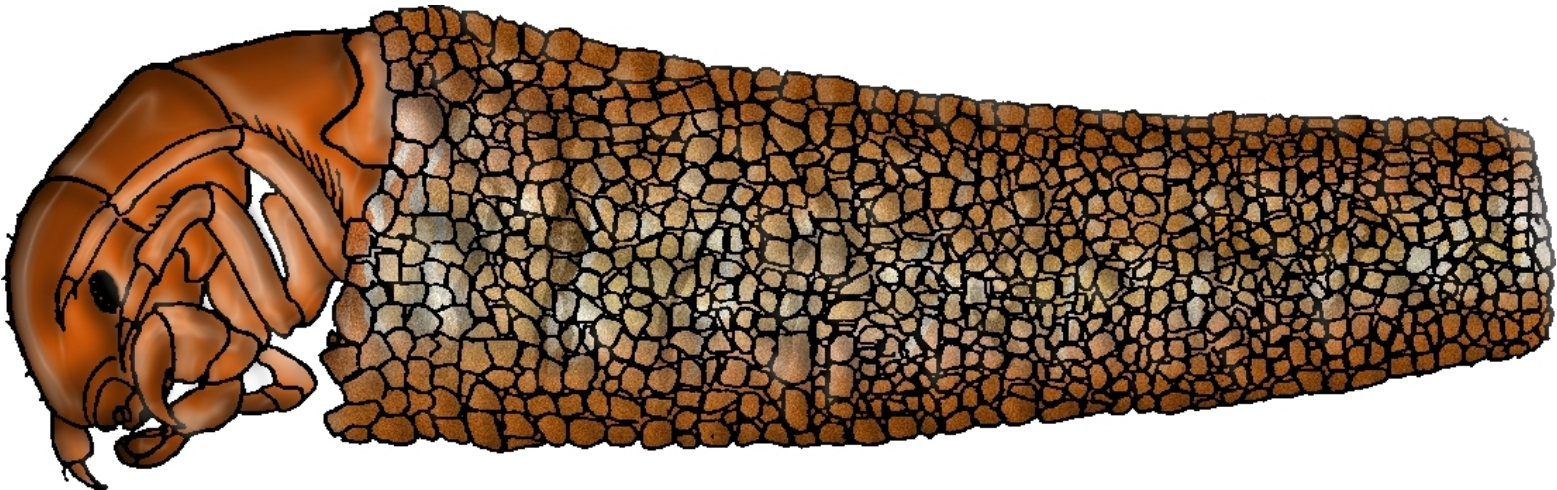
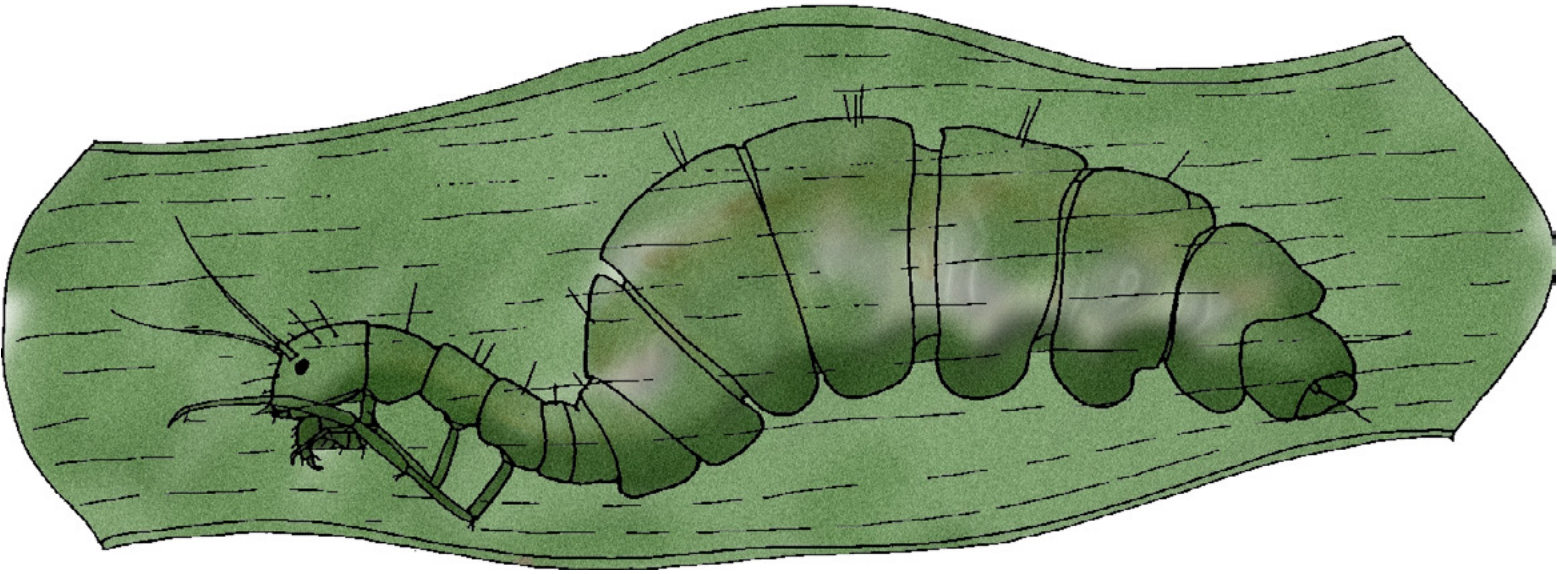
I am a
WATER SCORPION

I live in the **Reed Zone** and am **very tolerant** to pollution.

I am a **carnivore** and I use long front legs to catch my prey.

I have a breathing tube which I use like a snorkel and I have excellent eyesight.

Caddisfly Larvae



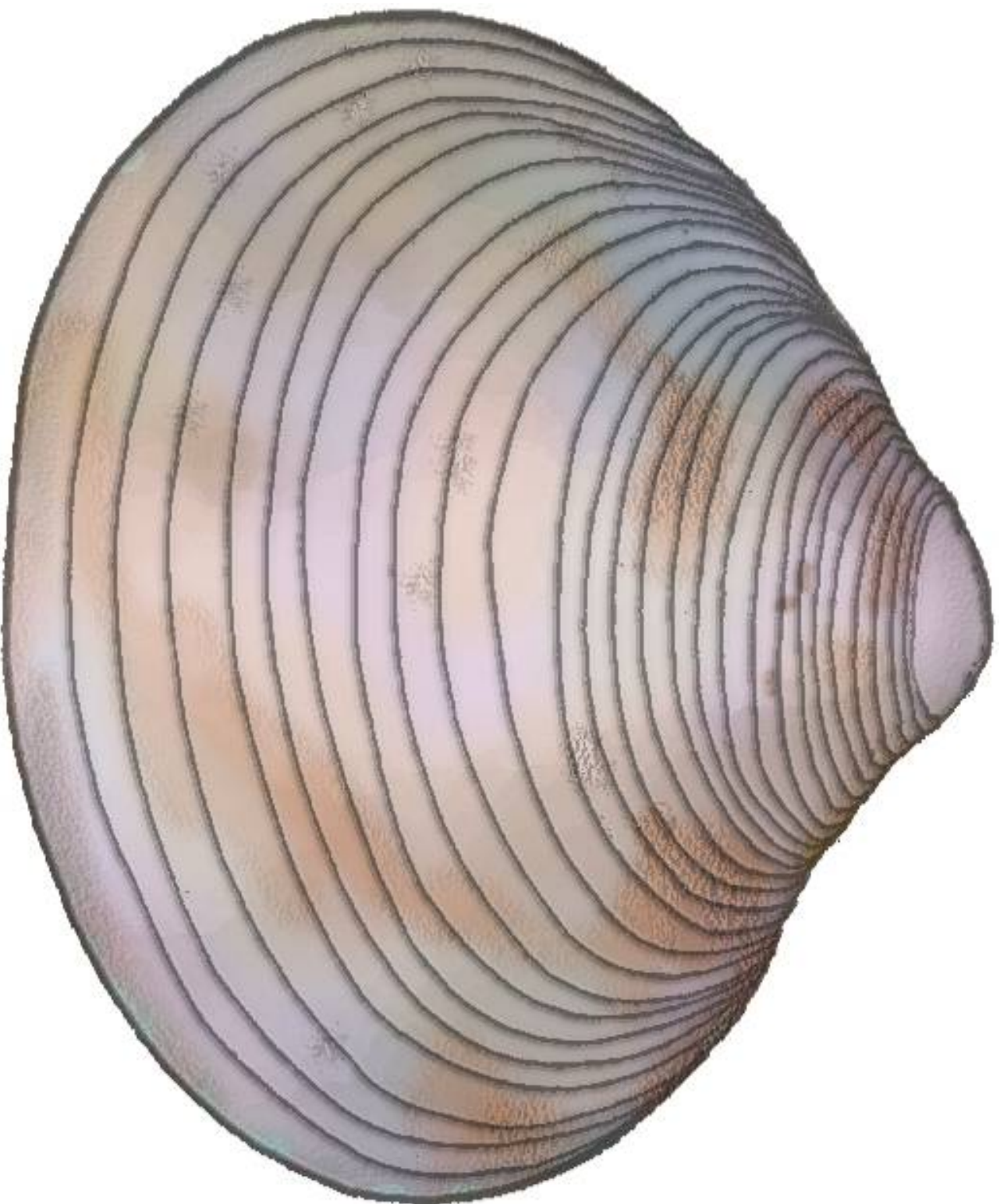
We are
CADDISFLY LARVAE

We are found in the **Benthic Zone** amongst rocks, branches and plants and we are **very sensitive** to pollution.

We can be **herbivores**, scraping algae from the surface of rocks, or **carnivores**, hunting for small invertebrates.

We build ourselves a protective case out of leaves, sand, reeds or sticks.

Pea Shell



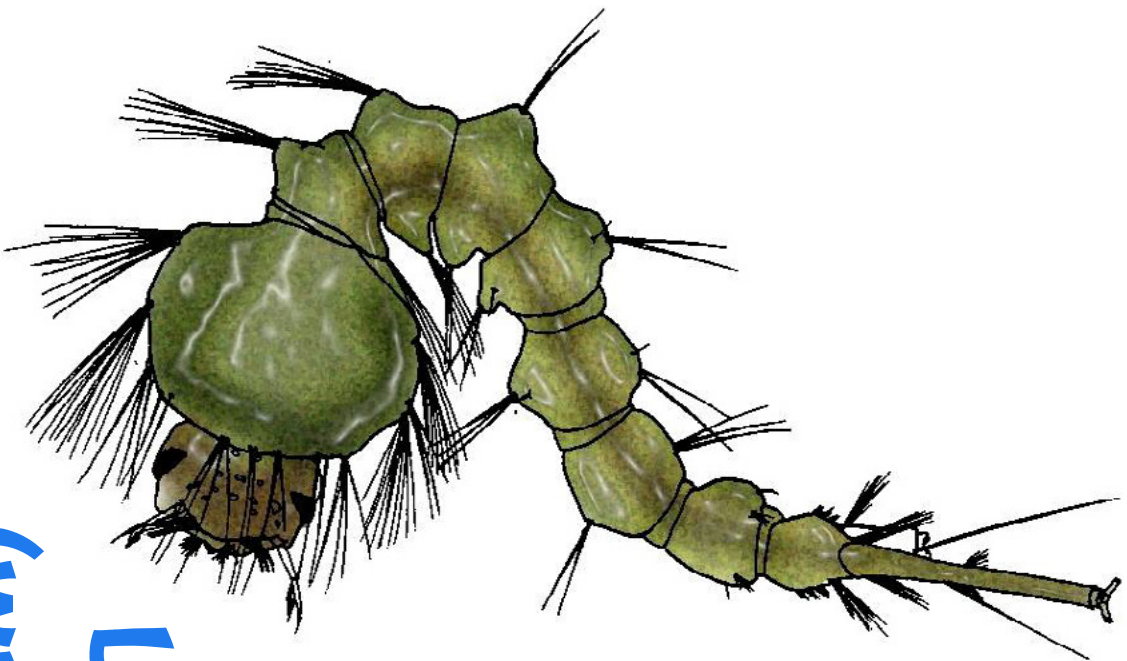
I am a
PEA SHELL

I live in the **Benthic Zone** and I am **tolerant** to
pollution.

I use my gills to filter the plankton and
decaying plants and animals from the water,
which makes me a **filter feeder**.

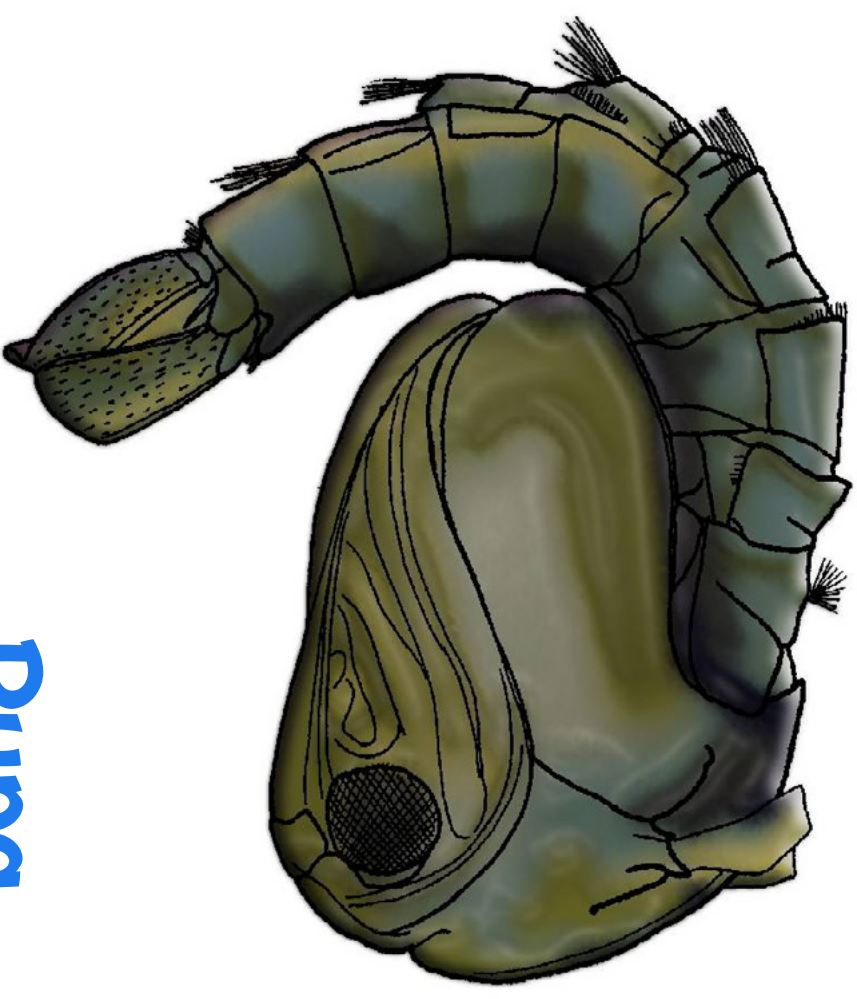
My shell has two valves which are hinged and
can close together to protect me.

Mosquito



Larva

(wriggler)



Pupa

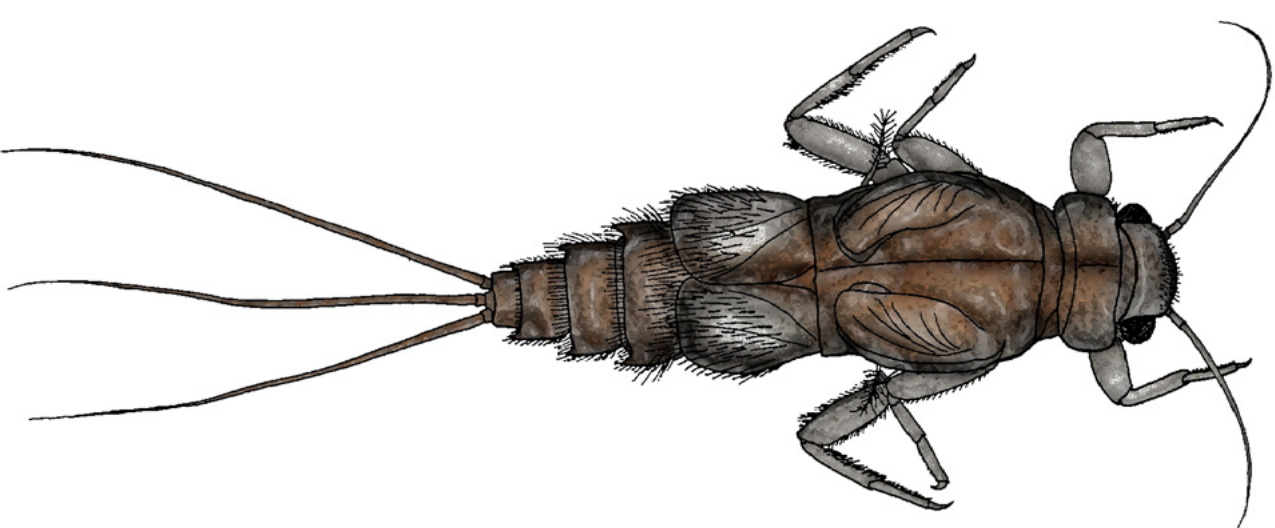
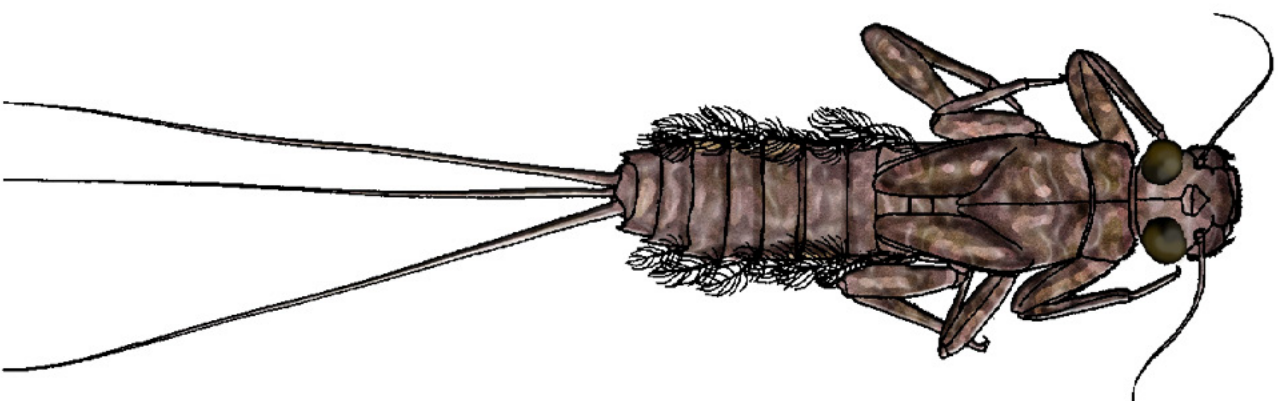
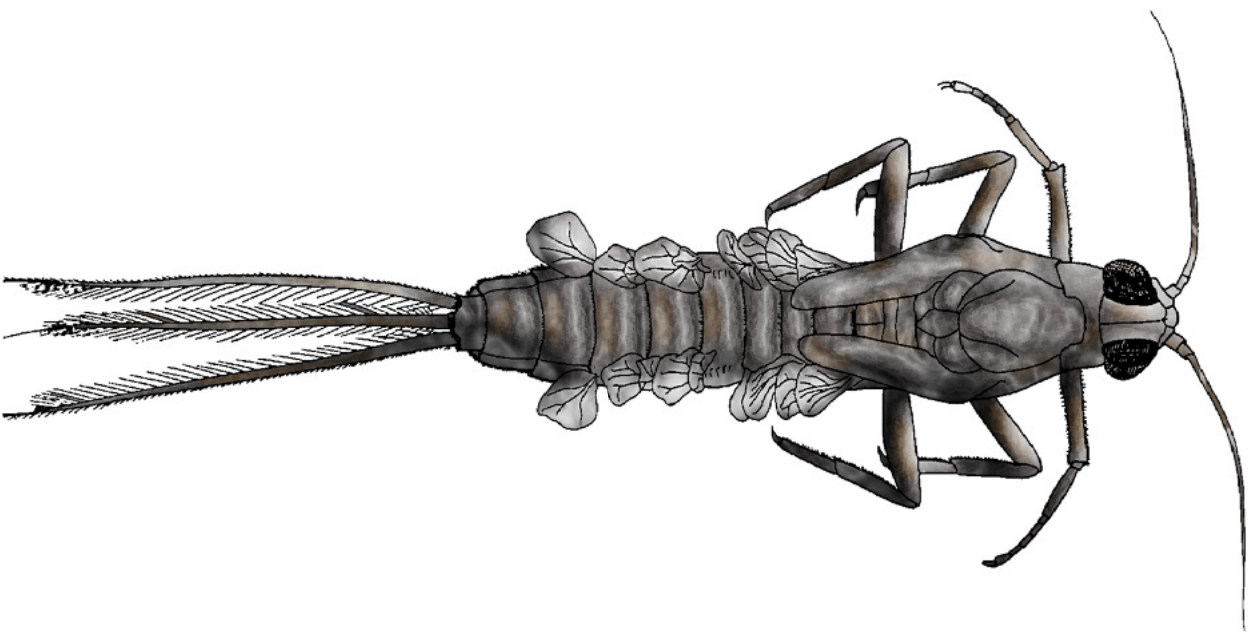
(tumbler)

We are
MOSQUITOES

We are usually found in the **Surface Zone** and are **very tolerant** to pollution.

When I am a **LARVA** I am a **detritivore** but when I become a **PUPA** I do not eat at all, so I have to eat enough in my larval stage to make it through to becoming an adult!

Mayfly Larvae



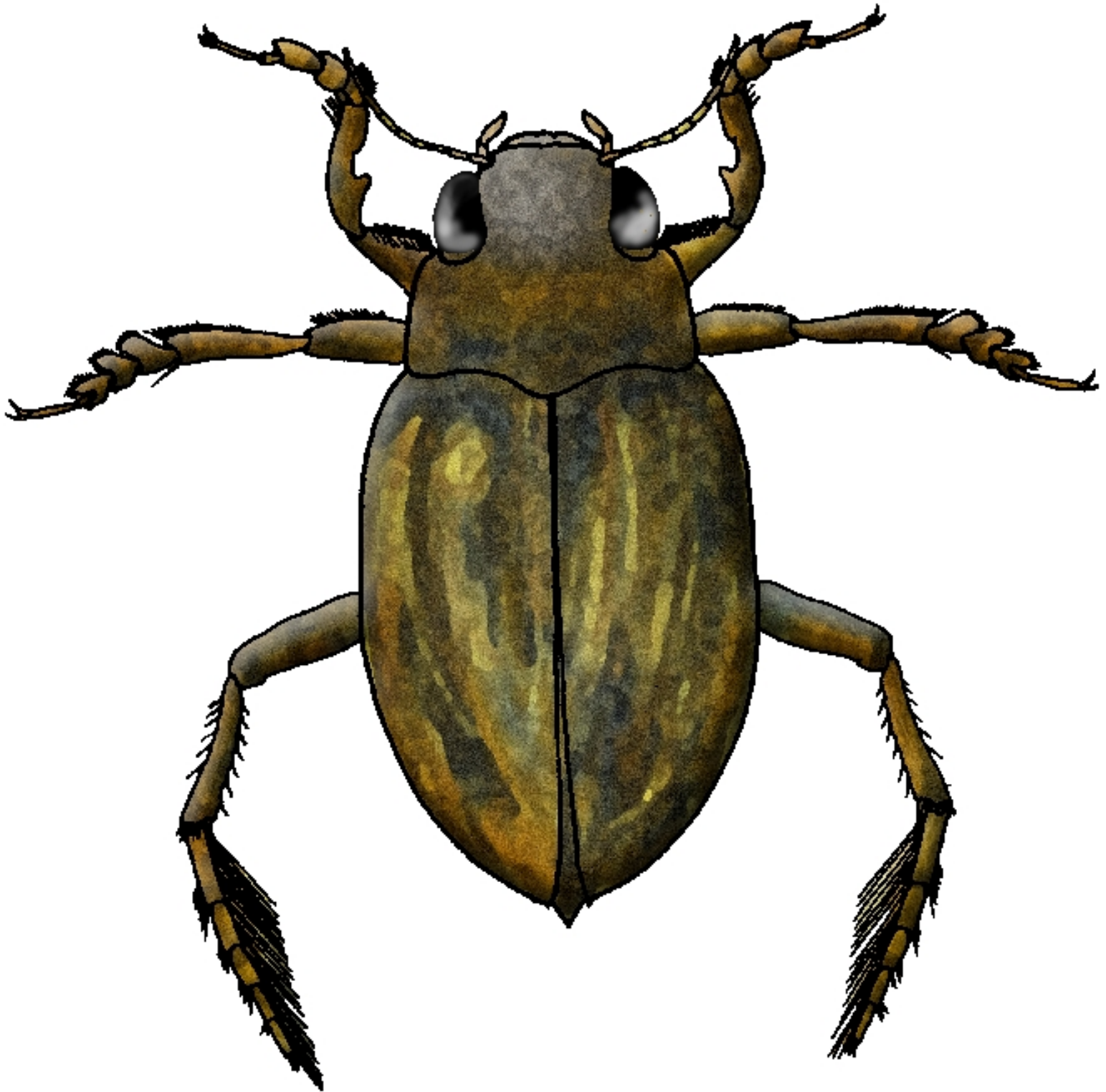
We are
MAYFLY LARVAE

We live in the **Substrate Zone** and are **very sensitive** to pollution.

We are **herbivores** and like to graze on dead plants and leaves.

When we are adults we may only live for a few days or even hours!

Predacious Diving Beetle



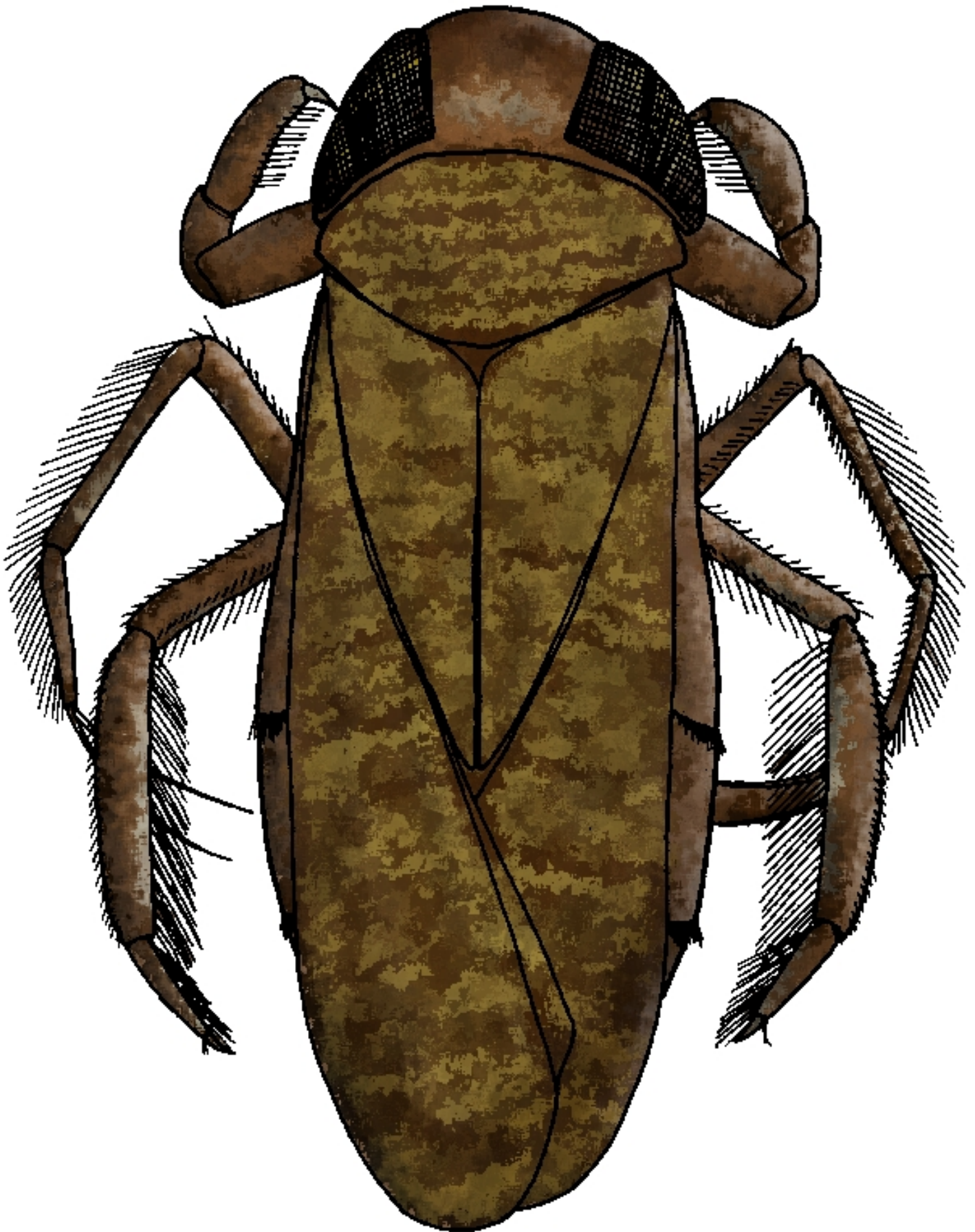
I am a
PREDACIOUS DIVING BEETLE

I live in the **Surface Zone** and I am **very tolerant** to pollution.

I am a **carnivore** and I eat other aquatic invertebrates, and sometimes even attack small fish and tadpoles!

I have chewing mouthparts which helps me eat them... yum!

Water Boatman



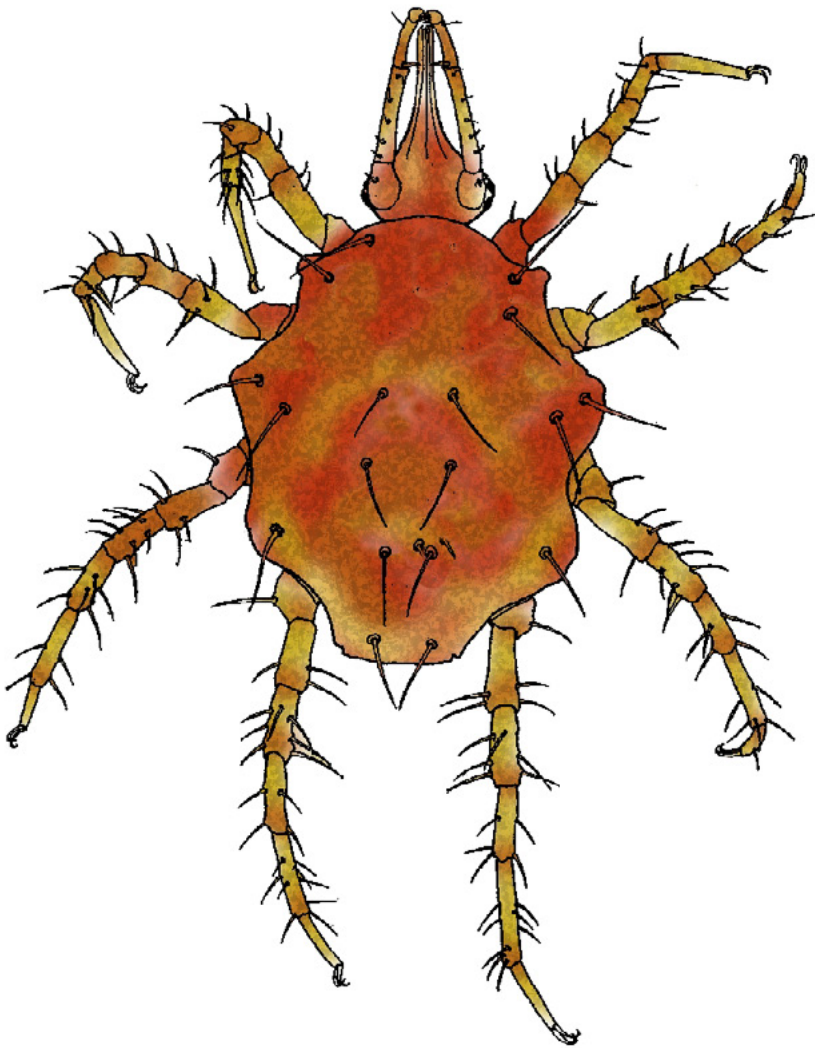
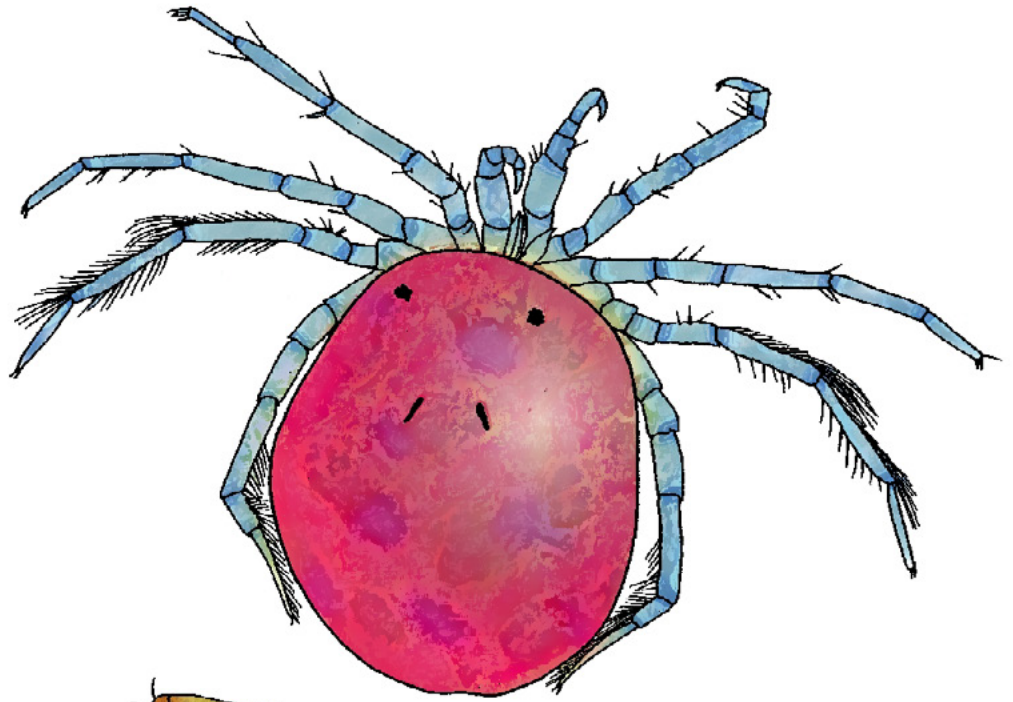
I am
WATER BOATMAN

I am common in all types of aquatic habitats in the **Deep Zone** and am **very tolerant** to pollution.

I am an **omnivore** and eat algae and other small invertebrates.

I breathe under water by carrying a bubble of air under my wings.

Water Mites

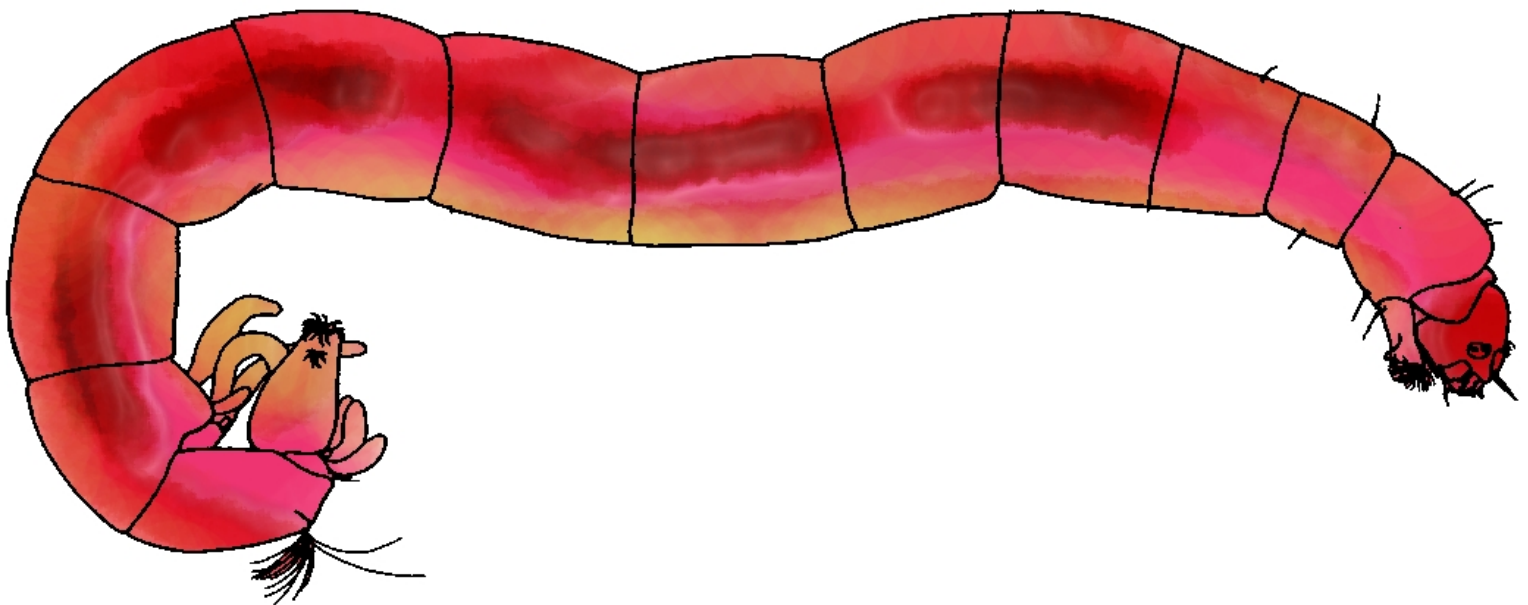
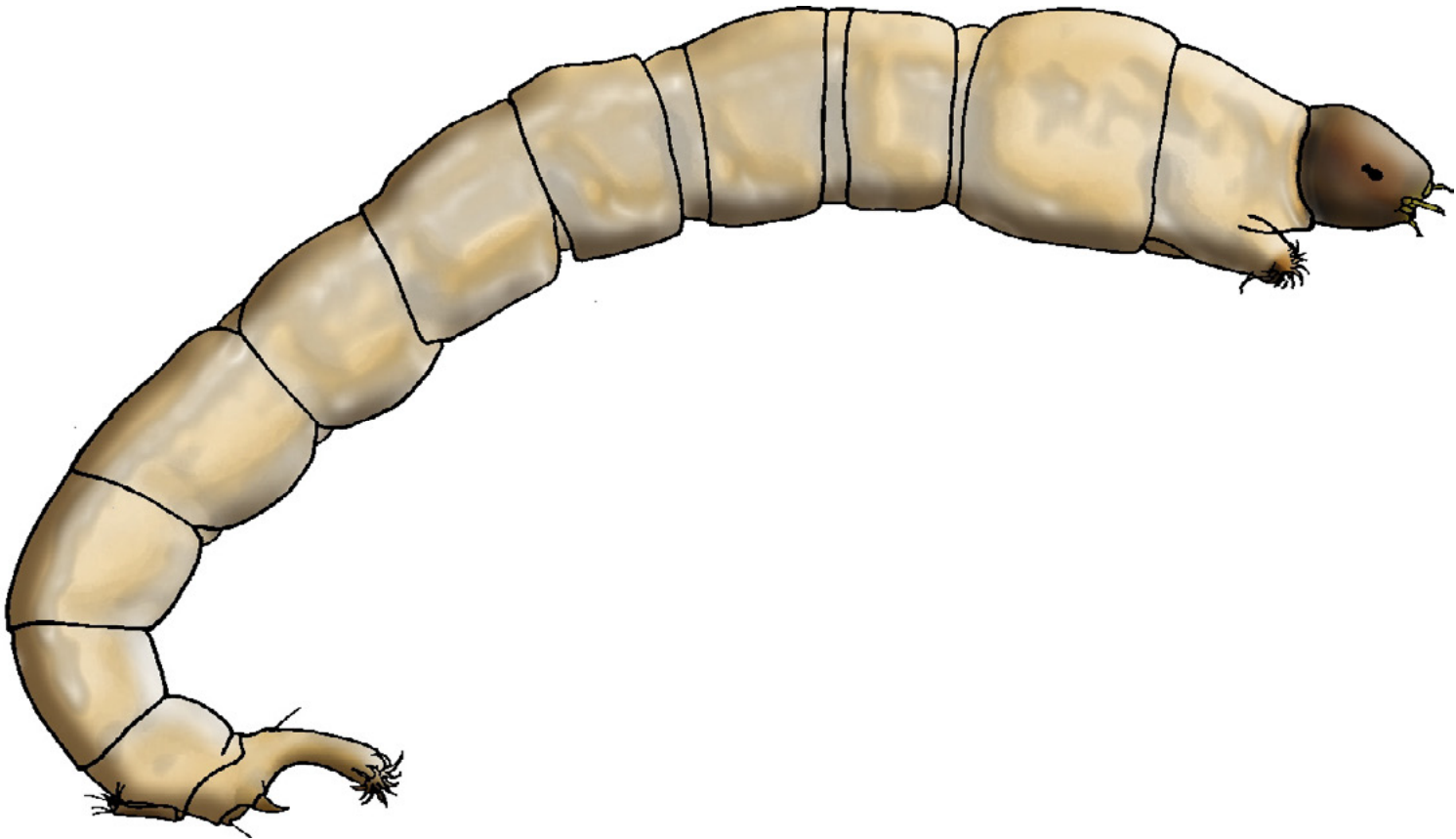


We are
WATER MITES

**We are usually found in the Reed Zone
amongst plants in sheltered waterways and
are sensitive to pollution.**

**We are carnivores and feed on small animals
by sucking their juices.**

Non-biting Midge Larvae



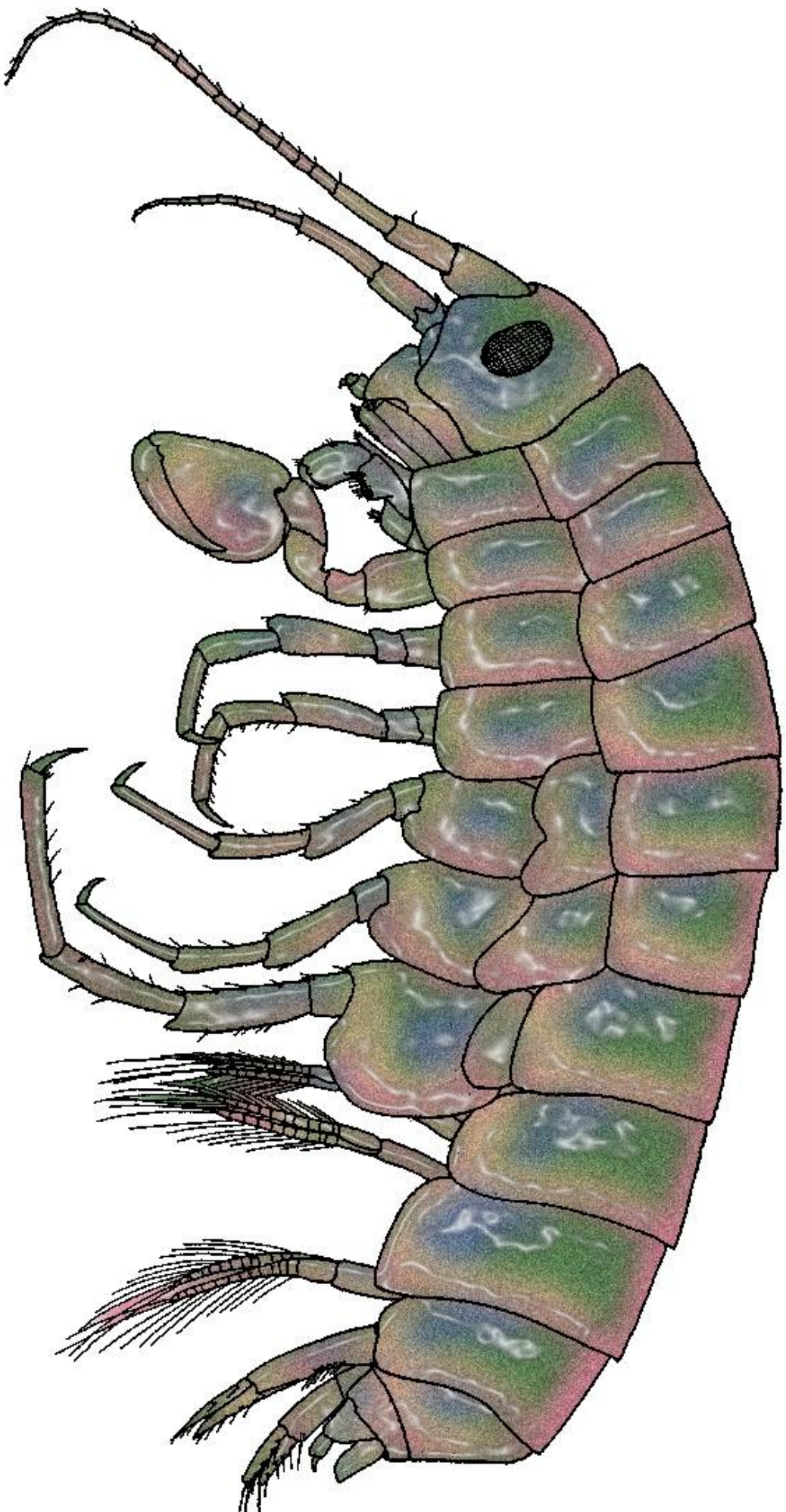
We are
NON-BITING MIDGE LARVAE

We live in the Benthic Zone and are very tolerant to pollution.

We are omnivores and eat decaying plant and animal matter.

We are often found in places with little oxygen available, such as where leaves are rotting.

Scud

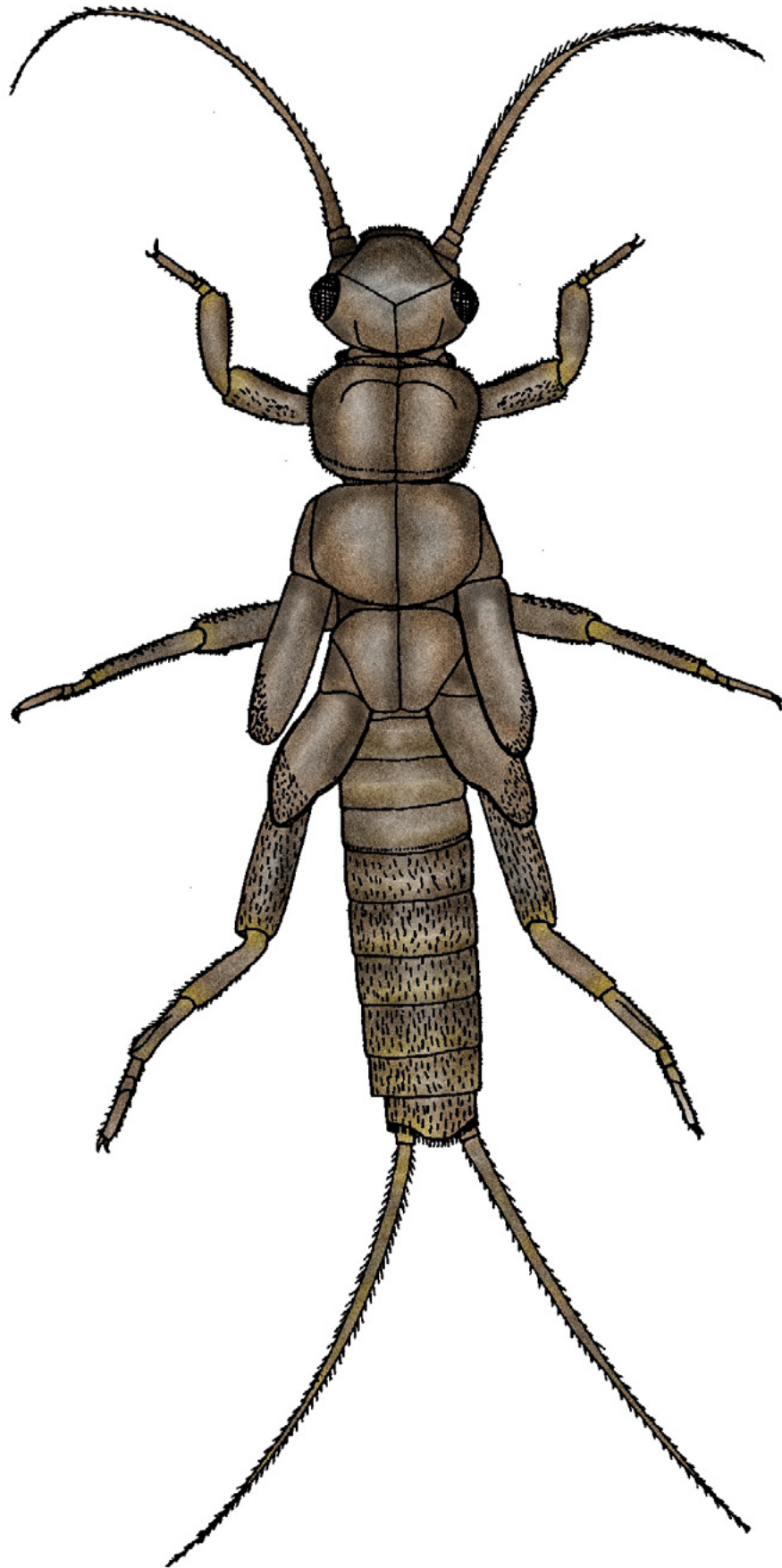


I am a
SCUD

I live in the **Reed Zone** in still or slow flowing water and I am **very tolerant** to pollution.

I am an **omnivore** and I eat most things that fit in my mouth.

Stonefly Larva



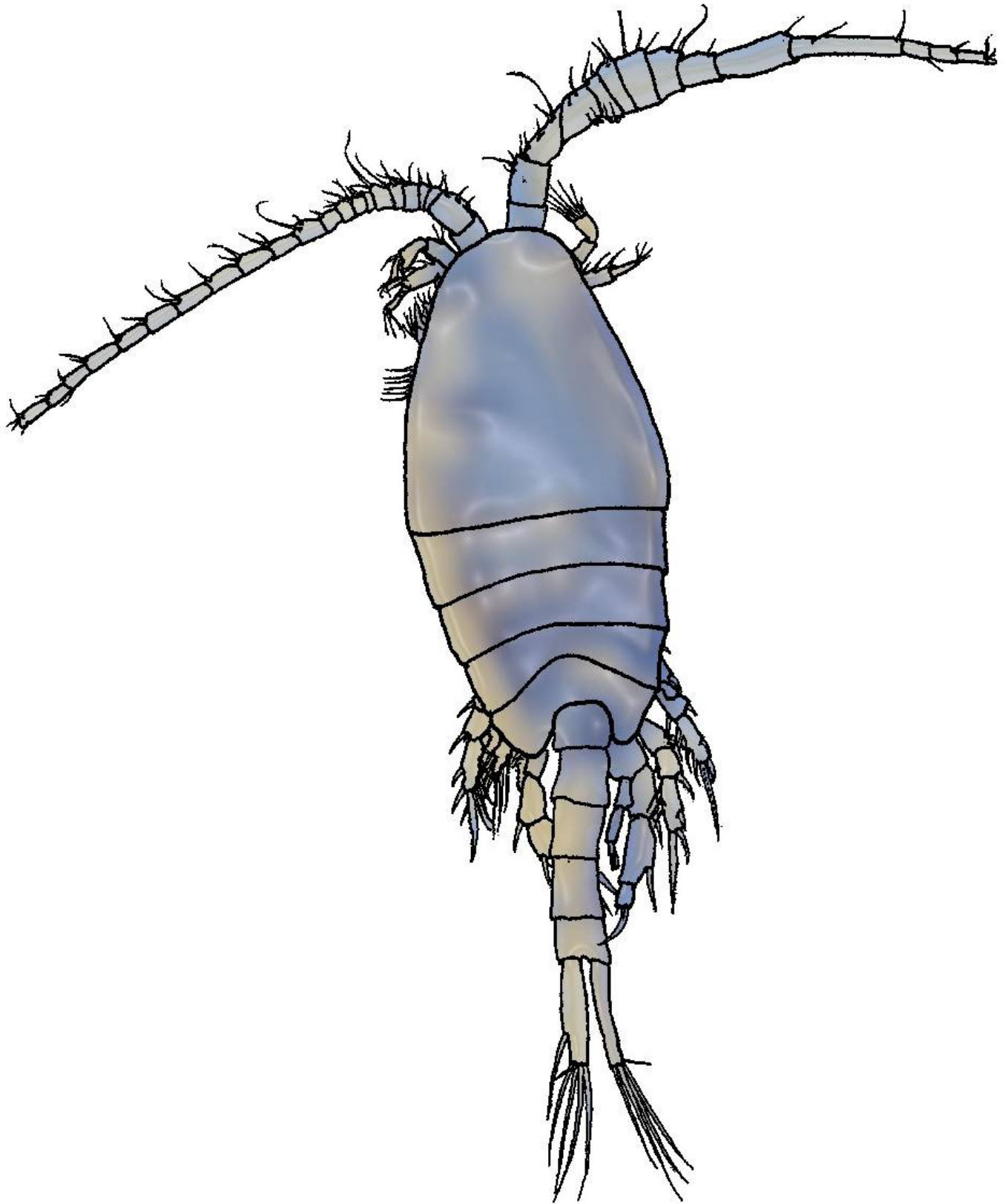
I am a
STONEFLY LARVA

I live in the **Substrate Zone** on stones in the fast flowing sections of creeks or amongst reeds in slow moving water.

I am **very sensitive** to pollution.

I am a **herbivore** and eat decaying plant material.

Copepod



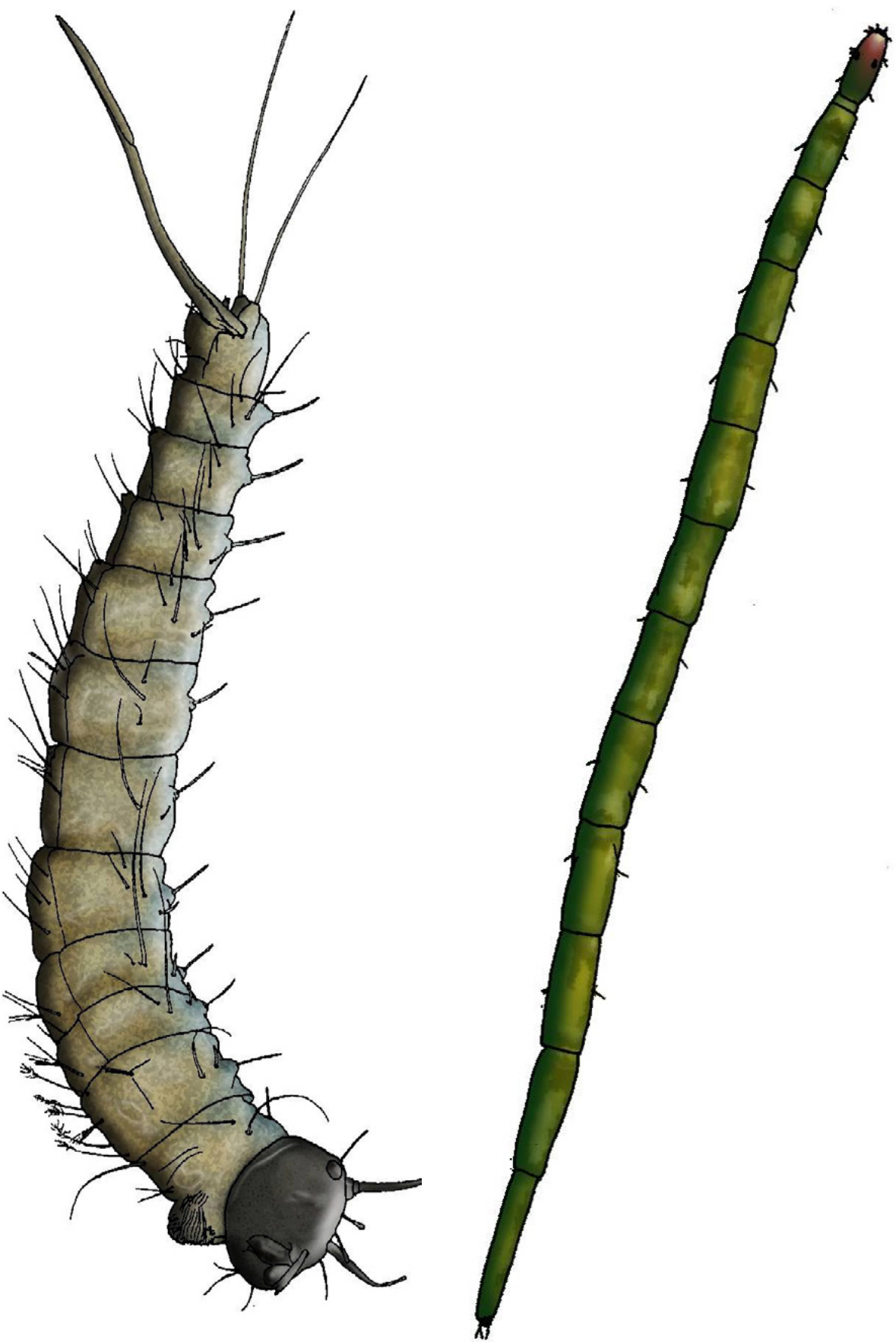
I am a
COPEPOD

I am usually found in the **Surface Zone**.

Most copepods are **herbivores**, but some are **carnivores**.

I live for less than two months!

Biting Midge Larvae



We are
BITING MIDGE LARVAE

We are usually found in the Benthic Zone and are tolerant to pollution.

Most of us are herbivores, but some of us are carnivores.